



**UNIVERSITEIT VAN PRETORIA
UNIVERSITY OF PRETORIA
YUNIBESITHI YA PRETORIA**

CHECKPOINT VPN INSTALLATION GUIDE

INFORMATION TECHNOLOGY SERVICES

Title	Checkpoint VPN
Version	1.1
Status	Final
Date	2013-01-24

TITLE AND SYNOPSIS

Title	Checkpoint VPN
Version	Version 75.30
Status	Final
Date	2013-01-24
Synopsis	This document is used as a tutorial for creating a secured connection to a Wireless network.
Author(s)	Author(s) – G. Morige, revised for R75.30 client by C.S. Ceronio
Contributor(s)	N/A
Copyright	© University of Pretoria 2012. All rights reserved. Information in this document is subject to change. No part of this document may be reproduced, or transmitted, in any form, or by any means, electronic or mechanical, for any purpose, without the express written permission of the University of Pretoria.

TABLE OF CONTENTS

TITLE AND SYNOPSIS	2
TABLE OF CONTENTS.....	3
1. Prerequisites	4
2. Additional Information	4
3. Procedure.....	4

1. Prerequisites

Microsoft Windows XP, Windows 7 32bit or 64bit.

2. Additional Information

The Securermote application can be downloaded from the URL:
<ftp://ftp.up.ac.za/pub/firewall/CheckPointVPN.msi>

3. Procedure

The Checkpoint VPN application can be downloaded from the URL:

You will need to first download the installation file.

Click on the CheckPointVPN.msi hyperlink to download the application to your local hard disk drive.

The File Download dialog appears on the screen.

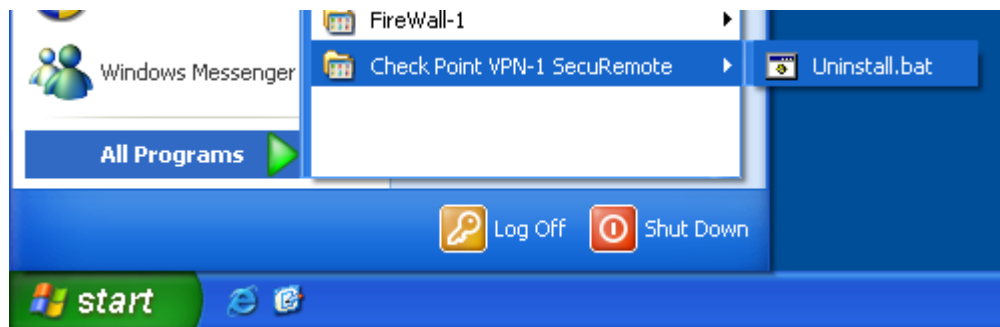
Click on the Save button and save the application file on the Windows Desktop.

Close all other applications that currently open.

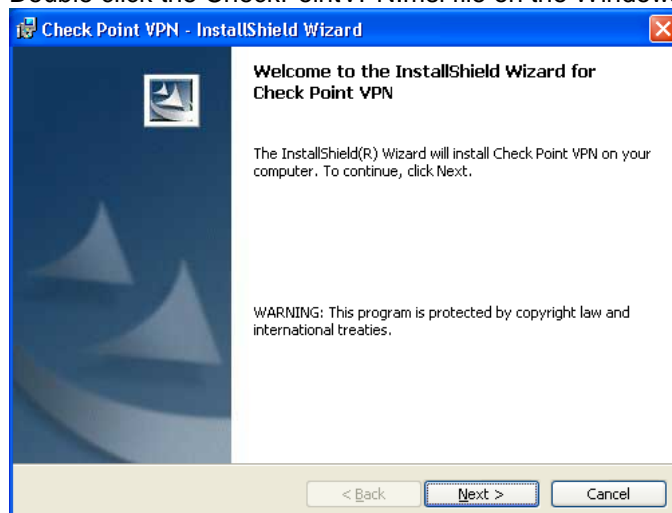
If you still have the old Securermote client loaded, it must be uninstalled first.

a. Under Start > Control Panel > Add Remove programs (Program and Features for Vista/Win7), Select "Check Point VPN-1 Securermote" and Remove.

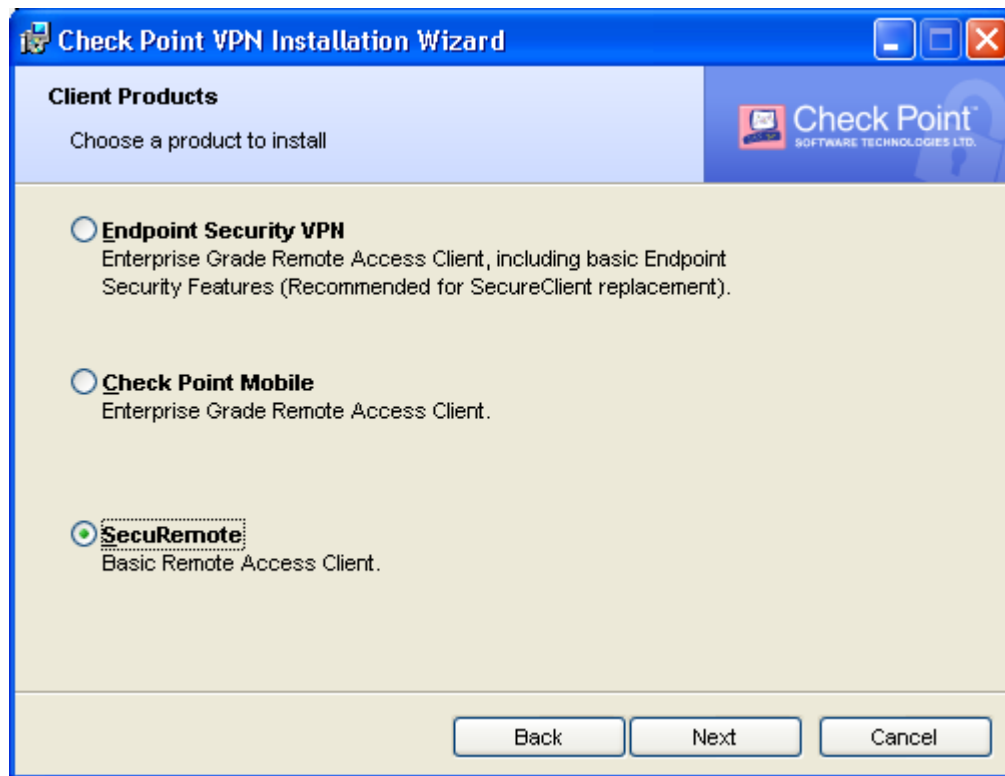
b. If the program is not listed under Add Remove programs, please uninstall this by selecting the **Uninstall.bat** link through the Start menu:



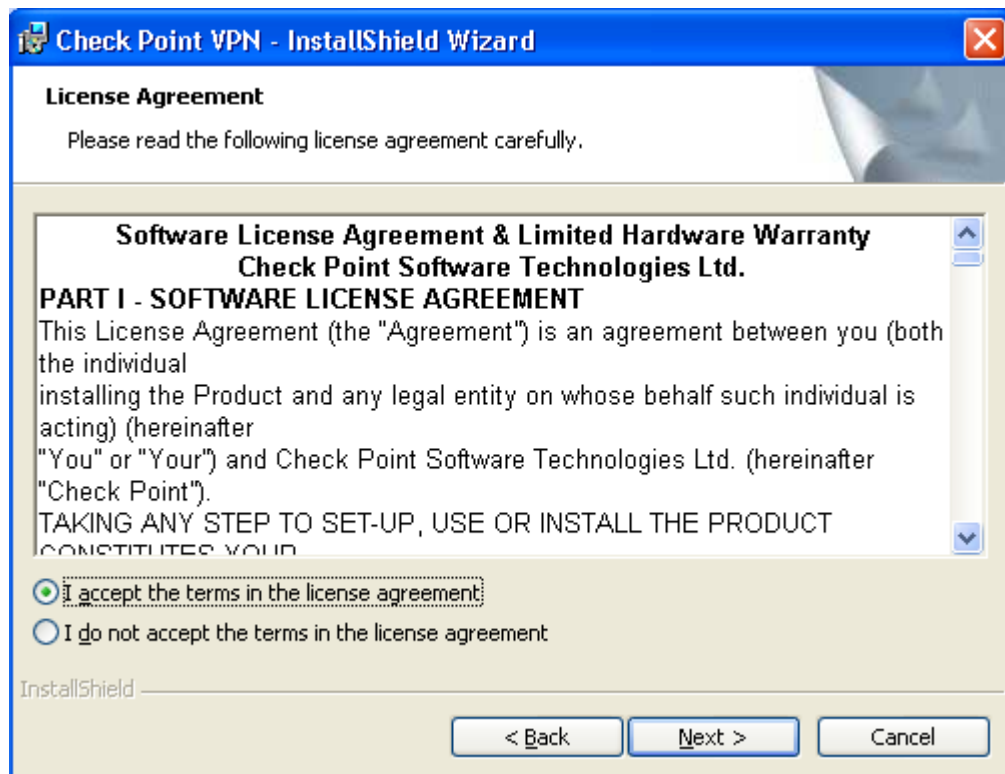
Double click the CheckPointVPN.msi file on the Windows Desktop to install the application:



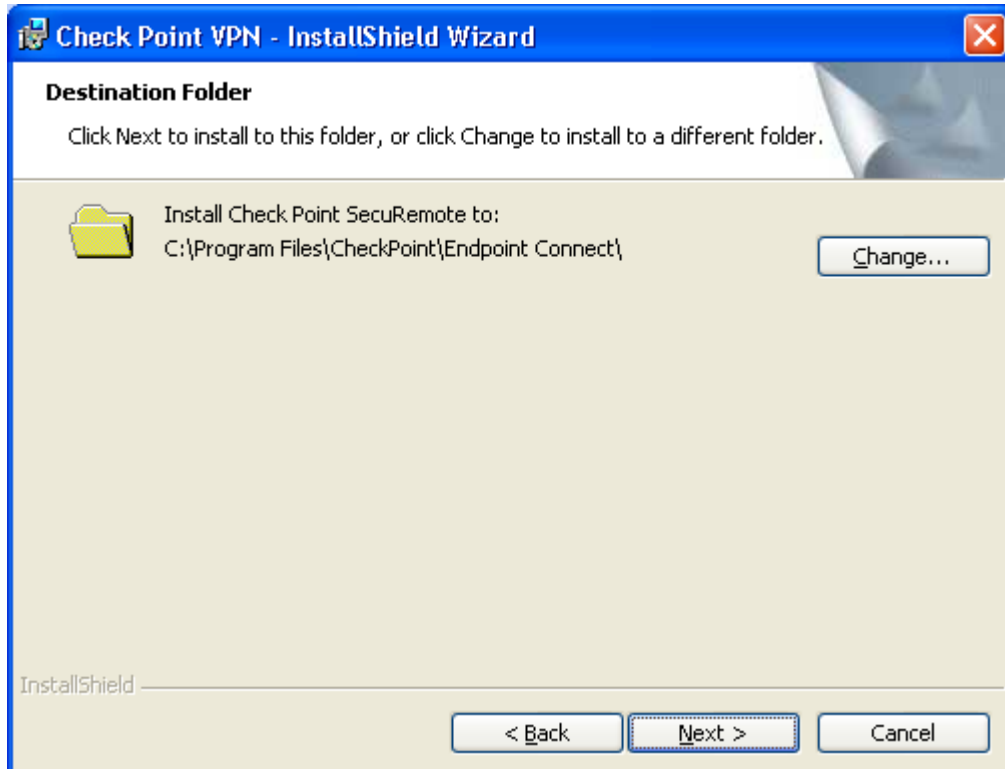
Select **SecuRemote**, then click on **Next**:



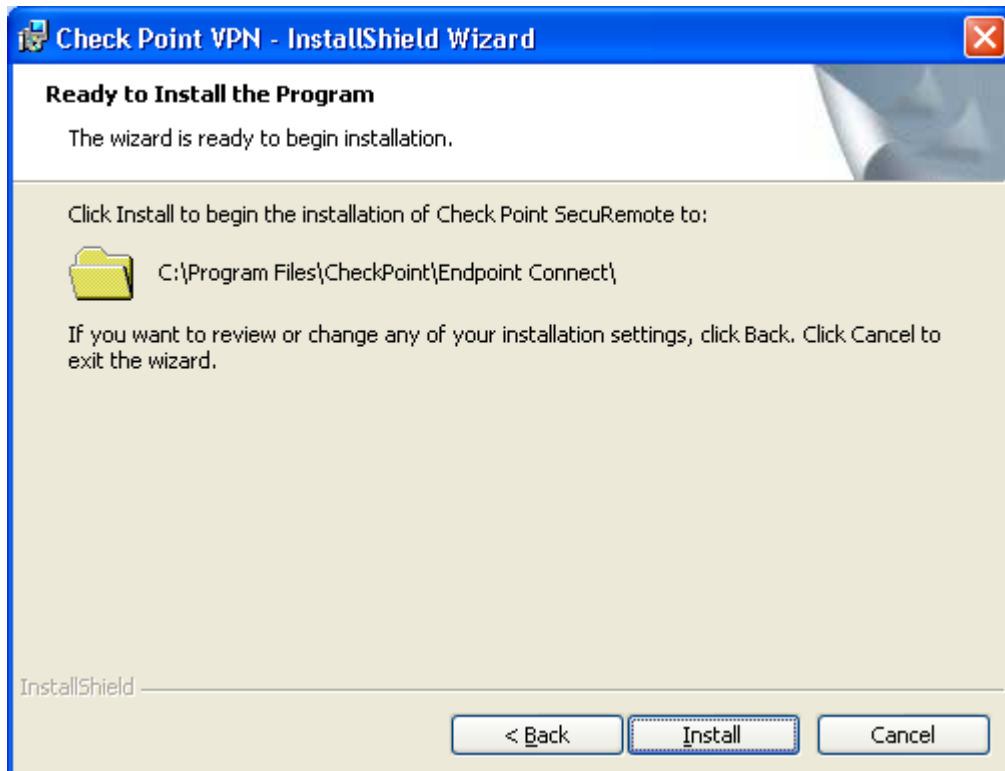
Agree to the License Agreement by clicking on **Yes**:



A location screen appears, click **Next** to accept the defaults:

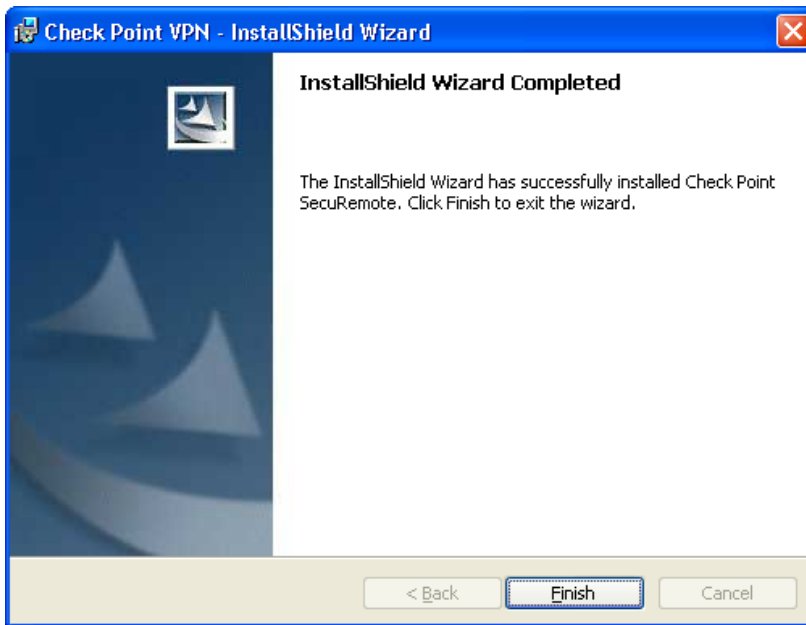


The program folder screen appears, click on **Install**:



The wizard is now ready to start installing and an approval screen appears.

Then click on **Finish**. The installation is now complete:



Double click on the lock icon:



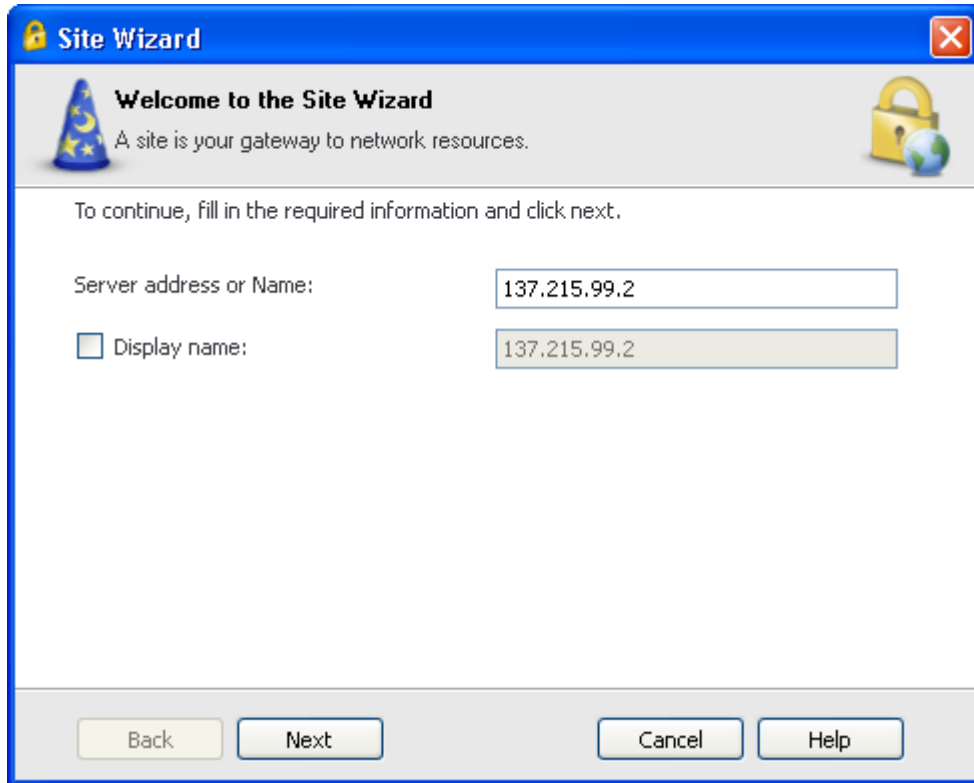
Click **Yes**:



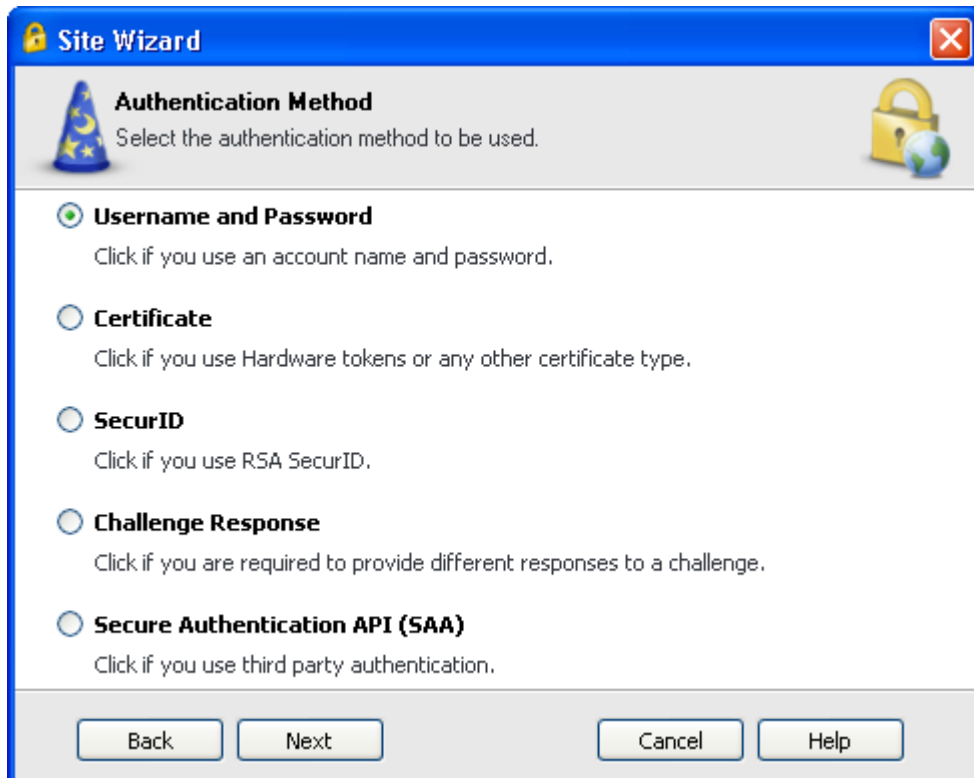
On the Site Wizard, click **Next**.



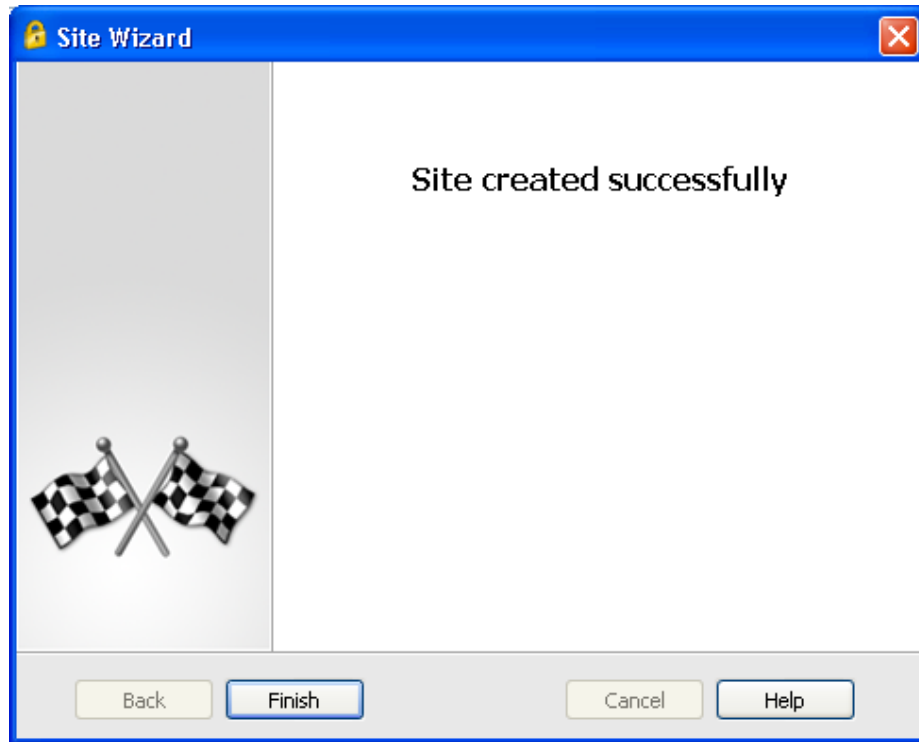
Type in the IP Address 137.215.99.2, and then click **Next**:



At the Authentication Method window, select **Username and Password**, then Next:

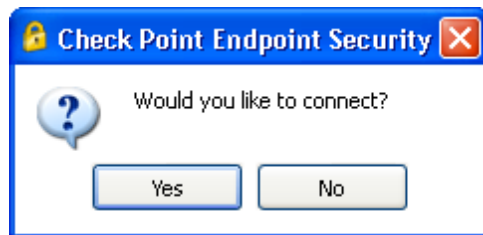


Then you should see:



Click **Finish**

At the prompt to Connect, select **Yes**:



Type your internet **username** and **password** and click on **connect**..:

